



CAPABILITY STATEMENT

WWW.STEELWORKS.AU

2023





Content

PAGE 3

About Us

PAGE 4

Our Vision, Our Mission

PAGE 5

Our Community-Minded Approach

PAGE 6

Our Team

PAGE 7

Resources and Training

PAGE 8 - 13

Services

PAGE 14 - 29

Project Highlights

PAGE 30

Key Industries

PAGE 31

Current and Valued Clients

PAGE 32

Contact



ABOUT US

Steelworks Construction is a West-Australian owned and operated business that specializes in providing reliable and high-quality steel fixing, formwork, precast labor, rigging and scaffolding services for a diverse range of civil, industrial, commercial, and residential projects across Perth and Western Australia.

Our team comprises experienced and skilled professionals who are dedicated to delivering projects on time, within budget, and to the highest standards of quality and safety. We take pride in our ability to tailor our services to meet the unique needs and requirements of each project and client we work with.

At Steelworks Construction, safety and quality are our top priorities, and we have implemented strict measures to ensure a safe work environment for our employees, sub-contractors, and clients. We are a customer-centric business that values our clients' satisfaction, and we strive to maintain long-term relationships built on trust, reliability, and exceptional service.



OUR VISION

Our vision at Steelworks Construction is to provide innovative and sustainable solutions for all aspects of our work. We prioritize fostering healthy relationships within our team to guarantee that we meet the highest standards on all projects. Our community comprises diverse and diligent tradespeople and skilled laborers who are committed to delivering the best quality on your project.

OUR MISSION

Our mission is to deliver reliable, quality steel fixing, formwork, precast labor, and scaffolding services to our clients every time. We are committed to delivering projects on time, on budget, and to the highest standards of quality and safety, building strong relationships with our clients, suppliers, and the community.



OUR COMMUNITY-MINDED APPROACH

At Steelworks Construction, we firmly believe in the power of community and the spirit of sportsmanship. We understand that fostering a strong sense of togetherness is crucial for the successful completion of any project. Our main focus is on building healthy relationships within our team, which enables us to maintain the highest standards in all aspects of your project.

Our team consists of individuals from diverse backgrounds, each bringing their unique skills and expertise to the table. Collaboration and efficiency are at the heart of our approach, as we work together to achieve exceptional quality, valuing the well-being and growth of our team members, whilst creating a supportive and harmonious work environment. We frequently organize social events that engage with the community, ensuring that we forge connections beyond construction.

OUR TEAM

At Steelworks Construction, we prioritize the health, safety, and welfare of our employees, sub-contractors, and clients. To maintain a safe work environment, we ensure that our team members possess the necessary qualifications and experience, and we support Workplace Health and Safety (WHS) through an OHS Manual, OHS Procedures, OHS Policy, safe work method statements, and other relevant documentation.

With large teams available to work across Western Australia, including FIFO work for steel fixing, scaffolding, and precast labor, our flexible crews can be scaled to suit projects of any size. Our team members have a minimum of 2 years of experience in construction and hold extensive training and safety certifications in the industry.





RESOURCES & TRAINING

At Steelworks Construction, our primary commitment is to foster a team of highly skilled professionals specializing in steel fixing, formwork, scaffolding, and various construction labor roles. We are unwavering in our dedication to equipping our workers with the necessary resources and knowledge to thrive in the constantly evolving construction industry. Through a comprehensive approach, we offer a blend of practical training and on-the-job experience, ensuring that our workers receive expert mentoring tailored to their specific roles. We take pride in providing long-term employment opportunities and growth solutions for our workers, empowering them to build successful careers. By prioritizing the development and success of our team, we uphold our reputation for delivering excellence in every project we undertake.

For any enquiries into Steelworks Construction's resources and training programs, please email enquiries@steelworks.au or for more information visit www.steelworks.au

SERVICES - OVERVIEW

Steelworks Construction is a renowned provider of steel-fixing, form work, precast / prefabrication labor, and scaffolding services. Our focus is to ensure that your project is completed securely and expediently, starting from planning and collaboration with engineers, all the way to project completion. Our extensive portfolio covers a broad range of services, including but not limited to, super structure works on a variety of structures such as low-rise to high-rise apartment buildings, warehouses, roads-rail-pedestrian bridges, mining conveyor & crusher structures, and major retaining walls.



Workforce Solutions:

Steelworks Construction specializes in providing both short and long-term workforce solutions throughout Perth and Western Australia. Our experienced personnel are prepared to join your site at short notice. We're dedicated to understanding your workforce needs and project specifics to provide a customized, efficient, and cost-effective workforce solution.

We provide an extensive range of workforce solutions to meet your onsite needs at every stage of your project. Our work-force solutions include, but are not limited to:

- General labourers to support and assist with manual work.
- Skilled labourers with specialised skills and experience in,
 - Steel Fixing
 - Concreting
 - Block Laying
 - Scaffolding
 - Rigging / Steel Erection
 - Formwork
 - Prefabrication
 - Carpentry



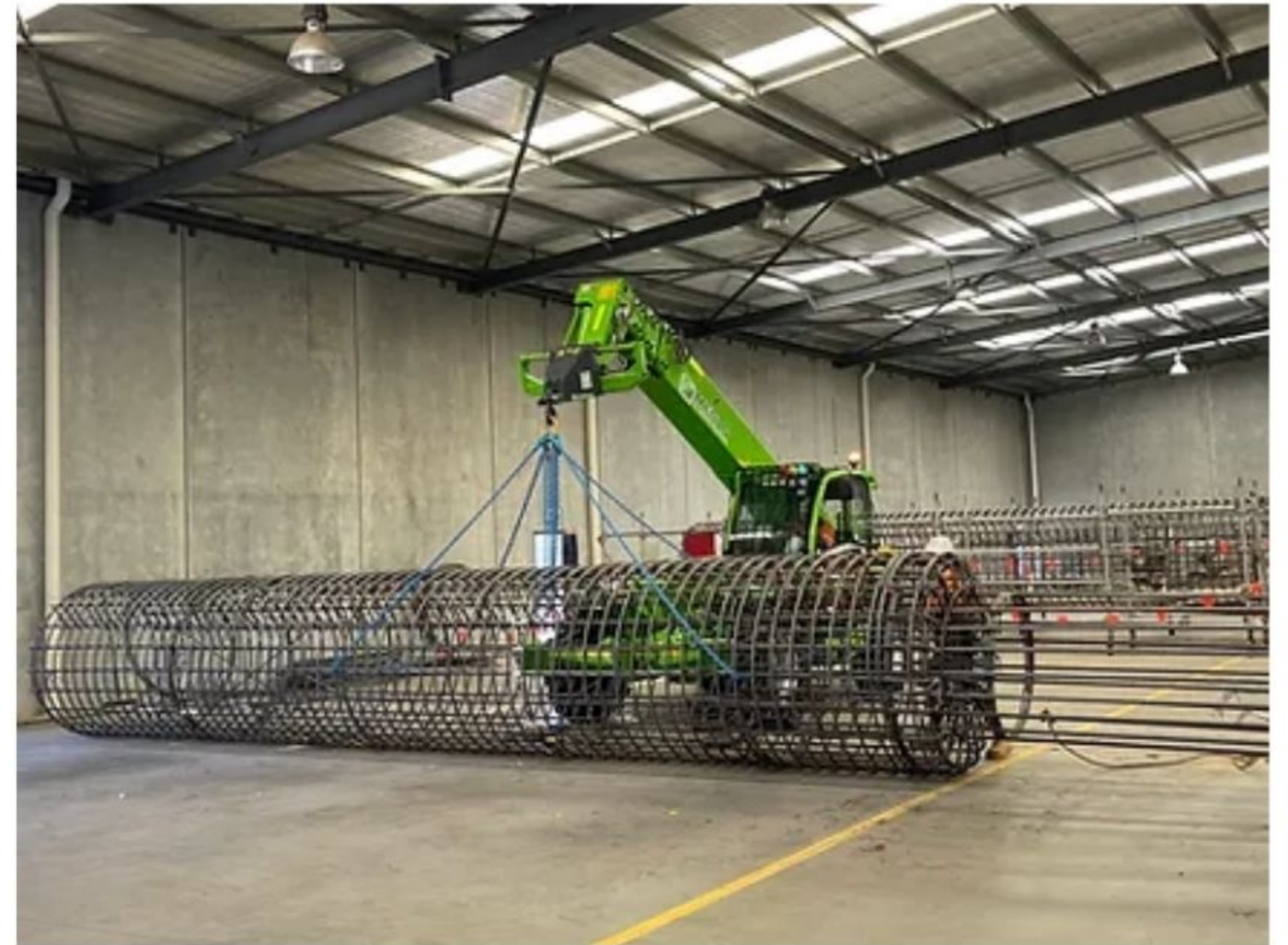
Steel fixing:

At Steelworks Construction, we understand the importance of providing reliable steel reinforcement services to our clients. That's why we deliver a wide range of services, including installation and placement of reinforced steel/mesh for concrete structures. From the initial planning stage, our team works closely with engineers to ensure that your project is executed efficiently and effectively. No matter the scale of your project, our steel fixing capabilities always deliver a premium service to our clients. We take pride in our ability to provide high-quality steel fixing services from project inception to completion, guaranteeing that your project is finished to the highest standard.



Pre-Fabrication and Formwork:

We are experienced in conventional and proprietary formwork systems, covering all aspects from design to erection. Our teams also specialise in tilt panel casting and precast construction. Steelworks Construction have in-house capabilities to pre-fabricate your reinforcement needs. Our team can deliver high quality, close tolerance, pre-fabricated Cages - Saving you time and money on site. We can do Column Cages, Pile Cage's, Pad Footings, Diaphragm Wall Cages, Mesh Cages, and much more.



Concrete:

Our expertise covers all aspects of concreting, including concrete placement, structural concrete, suspended concrete, footings and slabs, in-situ walls and slabs, tilt panel walls, and even bridge construction. Our team of skilled professionals has extensive experience and in-depth knowledge of all types of concrete applications, ensuring that we deliver exceptional results every time.



Scaffolding:

Steelworks Construction is a specialist access provider in the erection and dismantling of all forms of scaffolding systems, including conventional tube & clip systems and advanced system scaffolding.

Our scaffolding team are skilled in the following:

- Scaffolding & Access Design Management
- Tube & Clip, At-pac, Layher, Modular
- Fall Protection
- Temporary Enclosures
- Mobile Scaffolders



PAST PROJECTS - PRECAST:



PERMACAST – MELCONN METRONET RAIL UPGRADE PROJECT

Location	Robertson Road, Whitby WA
Client	Public Transport Authority
Contact Value	\$7M
Scope of Works	Steelworks demonstrated exceptional pre-cast concrete capabilities during the MELconnx Metronet rail upgrade. Our team skilfully handled steel-fixing, moulding, scaffolding and access works, and formwork, delivering critical structures such as U-beams, transverse planks, piers, and headstocks with precision. By contributing design solutions, we enhanced constructability, ensuring efficient fabrication and timely project milestones. Our technical acumen was particularly evident as we meticulously executed works within the exacting tolerances and specifications for rail infrastructure as set forth by the Public Transport Authority. Our scope of work encompassed a wide range of technical elements, such as precision earthing and bonding welding works – each weld undergoing rigorous testing and certification – and the implementation of robust cage bracing methods. Our involvement extended to the intricate handling of temporary works engineering, installation of cast-in items, and the incorporation of cooling pipes for concrete curing quality control.

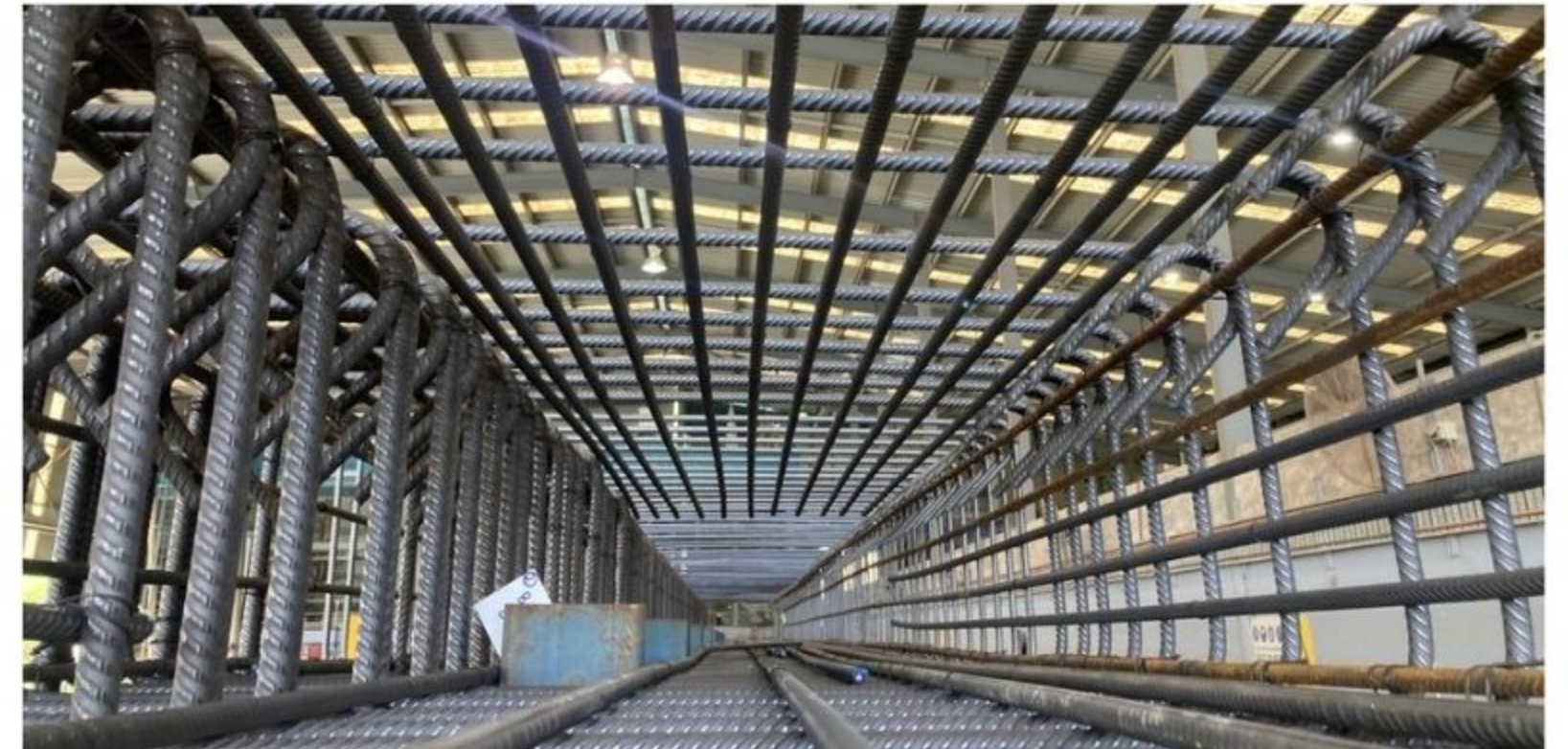


PERMACAST – MELCONN METRONET RAIL UPGRADE PROJECT



DELTA PRECAST – MAIN ROADS UPGRADE PROJECT

Location	218 Campersic Road
Client	Main Roads and Public Transport Authority
Contact Value	\$4M
Scope of Works	Steelworks were engaged by Delta Corporation to deliver several Pre-Cast Bridge Planks and Teer Offs for the Albany Ring Road and Bunbury Ring Road upgrade project. Our team predominantly handled steel fixing, moulding, and concrete pours, delivering critical structures such as U-beams, transverse planks, piers, and headstocks. Our scope of work encompassed a wide range of technical elements, such as precision earthing and bonding welding works – each weld undergoing rigorous testing and certification – and the implementation of robust cage bracing methods. Cast in items such as electrical conduits were centred within the moulds with additional bracing and welding to ensure locality was maintained whilst casting. Our involvement extended to the intricate handling of temporary works engineering, installation of cast-in items, and the incorporation of cooling pipes for concrete curing quality control.

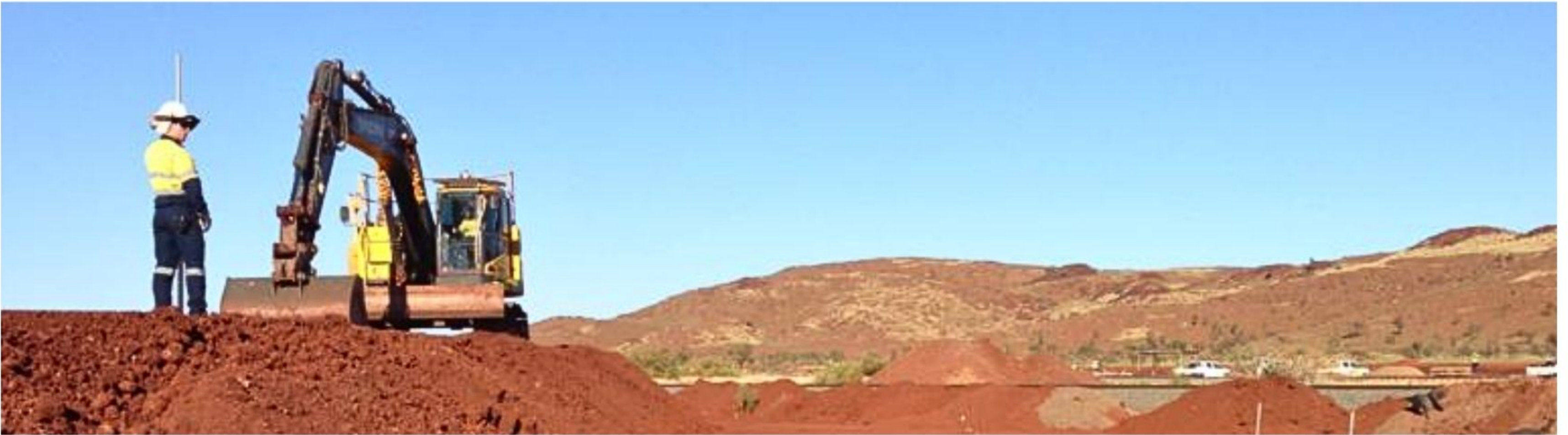


BGC – EVOLVE BAYSWATER ALLIANCE - METRONET

Location	Railway Parade Bayswater
Client	BGC Precast
Contact Value	\$2M
Scope of Works	Steelworks were proud to be involved in the pre casting of the EVB Bayswater Sound walls. BGC engaged Steelworks to provide a Workforce Solution to fabricate the formwork moulds and reinforcement cage assemblies of the retaining/sound barrier, which comprised of 6-8-metre-high precast walls. Our concrete team delivered a high spec finish by hand on what would be a challenging mould for optimum finish. This however, allowed for easier, cheaper, and safer lifting and delivery of the product.



PAST PROJECTS - CIVILS:



RIO TINTO IRON ORE - TRAIN REFUELER:

Location	Cape Lambert, Pilbara Region
Client	Rio Tinto
Contact Value	\$6M
Scope of Works	Steelworks carried out all bulk earthworks, detailed excavation, form, reinforcement installation and concrete pouring, along with a new build structure of a locomotive trip services and refuelling facility. Consisting of the construction of a new locomotive shed; installation of foundations and plinths for eight 110 kl diesel fuel tanks; pipe reticulation rack footings, Pipe Bridge foundations and footings in close proximity to rail corridor, oily water separator, water treatment and tailing ponds – plinths, pads, foundations, and associated earthworks.



RIO TINTO IRON ORE - FLASHBUTT WELDER

Location	8 Mile – Karratha, Pilbara Region
Client	Rio Tinto
Contact Value	\$4M
Scope of Works	Steelworks carried out all bulk earthworks, detailed excavation, form, reinforcement structure of a fully automated rail welding facility – Flash Butt Welder. Consisting of the construction of plinths, pads, foundations, and associated earthworks.



FMG CLOUDBREAK - 251 CULVERT HEADWALL:

Location	Cloudbreak, Chichester Ranges in the Pilbara Region
Client	FMG
Contact Value	\$4.2M
Scope of Works	Steelworks carried out all bulk earthworks, detailed excavation, Form, Reinforcement Installation and Concrete pouring / pumping for a series of Culvert Headwalls mitigate washout of FMG main line to Port Headland





BHP PORT HEADLAND WIND FENCES:

Location	Port Headland, Pilbara Region
Client	BHP
Contact Value	\$6M
Scope of Works	Steelworks carried out all bulk earthworks, detailed excavation, Form, Reinforcement Installation and Concrete pouring / pumping for the Wind fences footings and plinths.

MELCONN X PIER CAGES

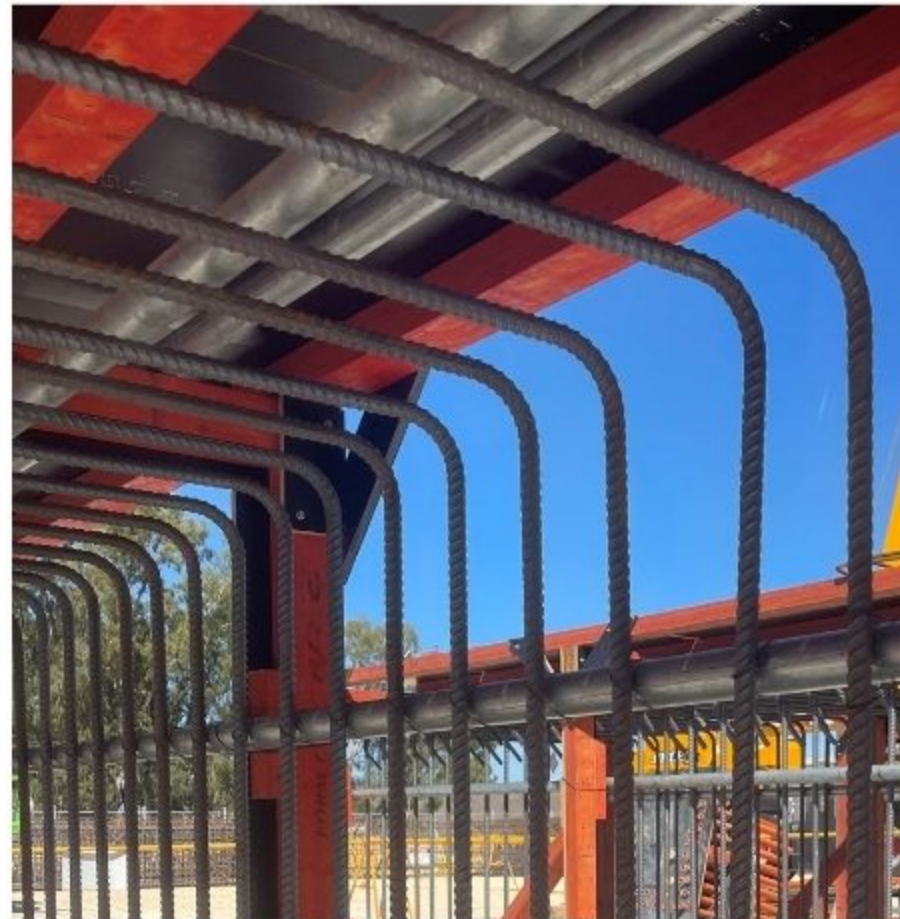
Location Morley – Ellenbrook Line

Client MELconnx

Contact \$2M

Value

Scope of Works Steelworks carried out temporary engineering, construction of jigs, steel fixing, welding, cramage and transport of pile and column/pier reinforcement cages.





YARA MINING - VALVE PIT - DAMPIER - PILBARA:

Location	Yara Mining, Dampier Archipelago in the Pilbara Region
Client	YARA Pilbara Nitrates - YPN
Contact Value	\$2.3M
Scope of Works	Steelworks carried out all bulk earthworks, detailed excavation, Form, Reinforcement Installation and Concrete pouring / pumping for a series of Valve Pits that were required to be completed prior to the shutdown turnaround for YARA Mining Ammonium Nitrate production facility.

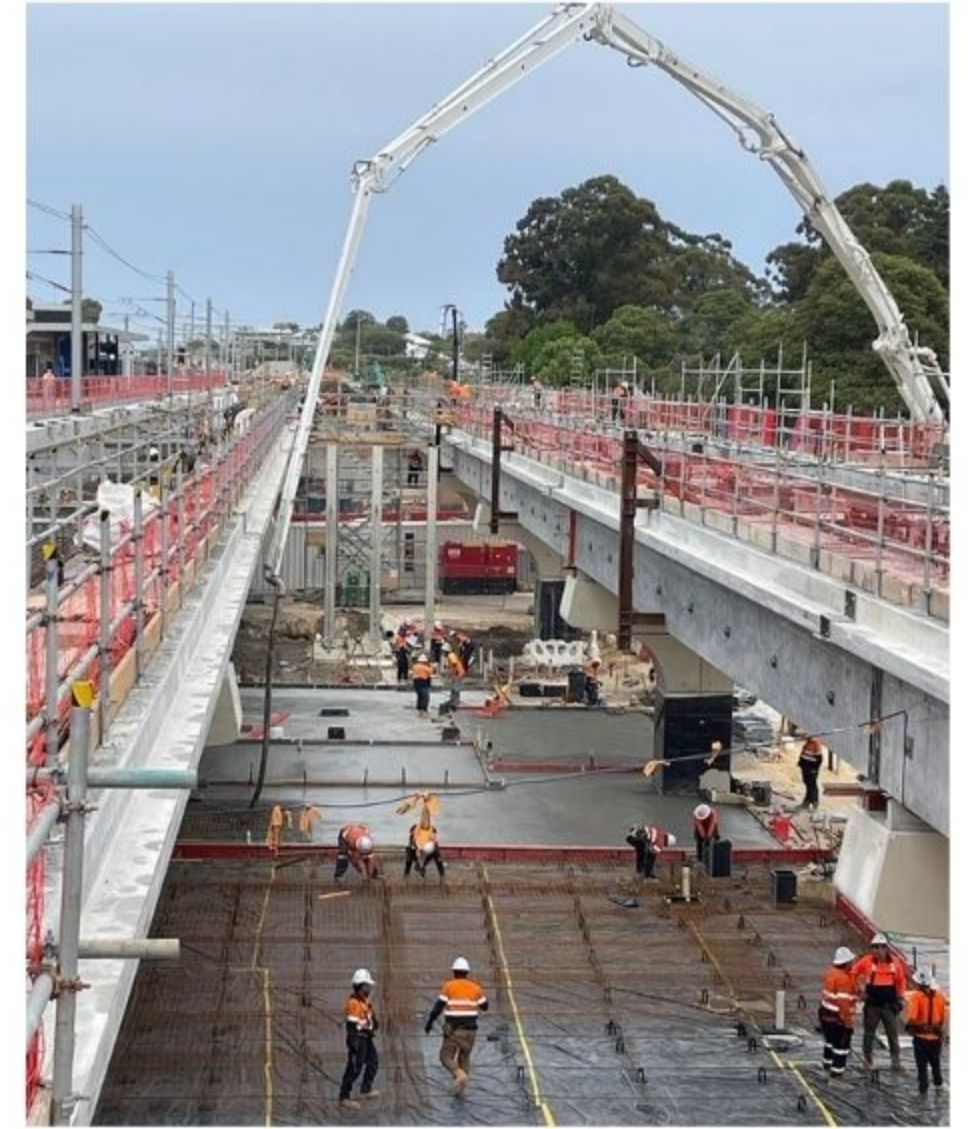
GRANARY DRIVE BRIDGE - MUCHEA

Location	Granary Drive; Muchea
Client	Main Roads WA
Contact Value	\$3M
Scope of Works	Steelworks carried out all bulk earthworks, detailed excavation, Form, Reinforcement Installation and Concrete pouring of this bridge structure at Granary Drive, Muchea. The works had to be carried out during the dry season as this was a low-lying bridge and very susceptible to flooding in the wet winter months. The bulk earthworks were critical path to enable the piling rig to gain access into the riverbed area to auger CFA piles prior to the commencement of the construction of the Abutments and Bridge Piers. Initially the bridge was designed to utilise precast planks, however due to the lead times, the client changed to an in-situ design. Steelworks had to change manage the structure very closely to ensure adherence to specifications and QA /QC.



BAYSWATER TRAIN STATION; BAYSWATER -ACCIONA

Location	Bayswater Trian Station; Bayswater
Client	ACCIONA – Evolve Bayswater Alliance (EBA); WA
Contact Value	\$3M
Scope of Works	Steelworks carried out detailed excavation, Form, Reinforcement Installation and Concrete pouring for the Stage 2 Concourse Level. The works had to be carried out on an accelerated program working through dayshift and night shifts with 3 crews on rotation. Steelworks mitigated program by managing design changes efficiently. Strict adherence to specifications and QA / QC were achieved through a dedicated site team that included a full-time project manager, site supervisor, contract administrator and site-based project engineer. Client change requests included the additional scope such as FRP to retaining walls, in situ fire water tanks, patch, kerbing, patching of precast elements and erection of structural steel. Considering the tight program and station opening deadline for stage 1, the team at Steelworks worked in harmony with EBA Station and Structures teams to achieve the critical milestones.



BELLEVUE RAIL CAR ASSEMBLY FACILITY

Location	Bellevue Rail Car Assembly Facility
Client	PTA (Perth Transport Authority)
Contact Value	\$6M
Scope of Works	Steelworks carried out the detailed excavation, Form, Reinforcement Installation and Concrete pouring for the build structure of the Rail Car Assembly Building and the High Voltage Test Facility. This included all the cat ins and set downs for the in-floor track system to be imbedded into the Rail Car Assembly floor slab. We worked with a fibre reinforced mix as well as mesh to create a "Combi Slab" ground slab makeup. We also custom fabricated our own on house formwork system to allow us to forma and pour the rail pockets into the super flat floor slabs. On the reinforcement package we steel fixed a touch over 2000 ton of reinforcement in 16 weeks.



BELLEVUE RAIL CAR ASSEMBLY FACILITY



KEY INDUSTRIES

Steelworks Construction are aligned with, but not limited to, the following key sectors:



Commercial



Industrial



Mining



Residential

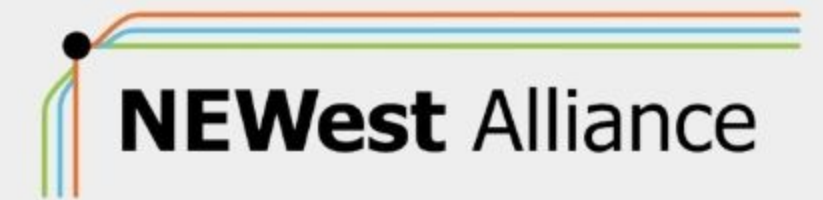


Renewable



Infrastructure

CURRENT & VALUED CLIENTS:





Contact

Chief Financial Officer - Charmaine Robinson

charmaine@steelworks.au

Project Director - Kai Tonkin

kai@steelworks.au

Commercial Manager - Aidan Glenn

aidan@steelworks.au

Business Development Manager - Con Patriotis

con@steelworks.au

General Manager (Tonnage) - Ihaka Whaanga

ihaka@steelworks.au

Accounts Manager - Skye Massey

accounts@steelworks.au